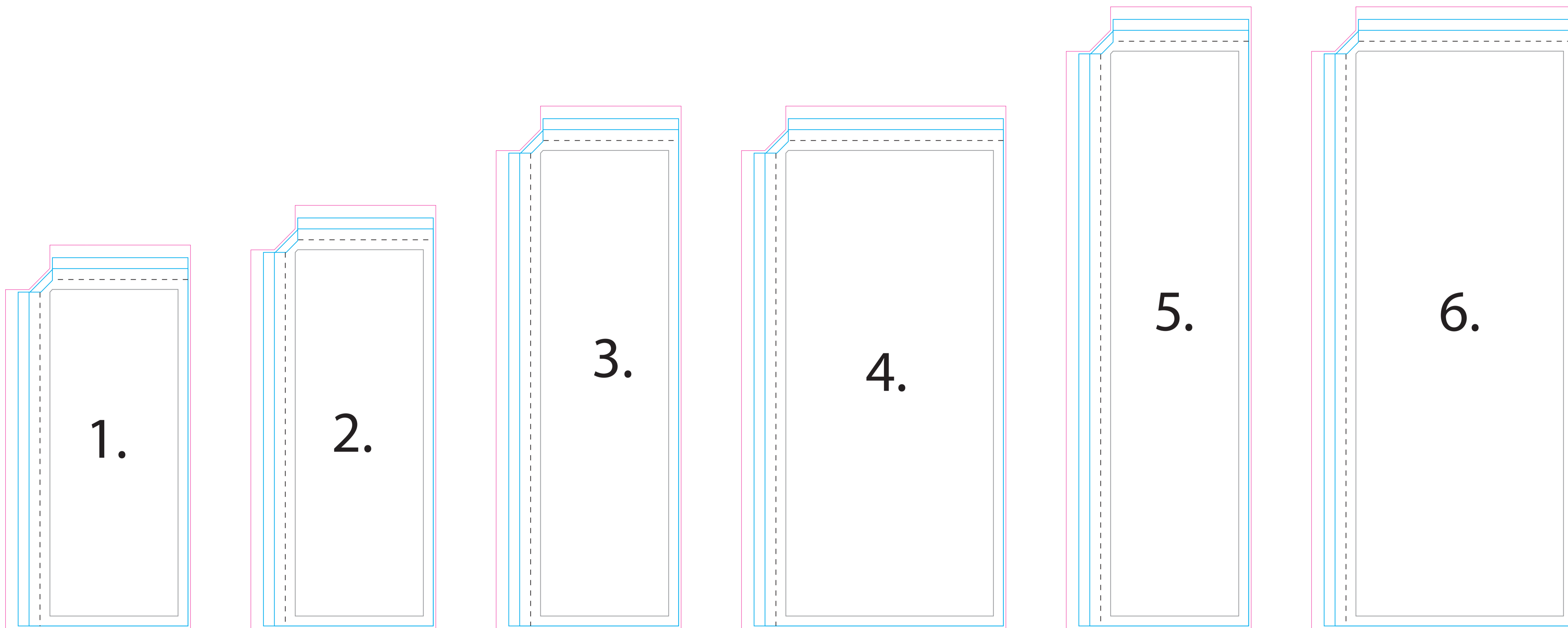


All templates are at 1:10 scale.

Please delete the templates not used.

All templates are at 1:10 scale.

Please delete the templates not used.



Q-Frame® CS200

1. Small 1 - GRQF001
2. Small 2 - GRQF002
3. Medium - GRQF003
4. Medium - GRQF004
5. Large - GRQF005
6. Large - GRQF006

- = Text/Image Safety Line
- = Bleed Line
- = Finished Size
- - - - = Stitching Line

1. Small 1
2.6ft (80cm) x 5.9ft (180cm)
2. Small 2
2.6ft (80cm) x 6.6ft (200cm)
3. Medium
2.6ft (80cm) x 8.2ft (250cm)
4. Medium
3.9ft (120cm) x 8.2ft (250cm)
5. Large
2.6ft (80cm) x 9.8ft (300cm)
6. Large
3.9ft (120cm) x 9.8ft (300cm)

- All artwork needs to be:
- Images: 1000 dpi @ 1:10 ratio
 - Text: completely vectorized
 - CMYK color mode
 - Spot colors (PANTONE) defined
 - Appropriate bleed

***Bleed Setup Custom for GCI finishing. (0.5" bleed on hemmed sides & 2.5" bleed on pole pocket sides)



Due to the inability to accurately reproduce some PANTONE® colors with CMYK inks, please reference a PANTONE® Color Bridge® book. This will provide a process color simulation for you to review.