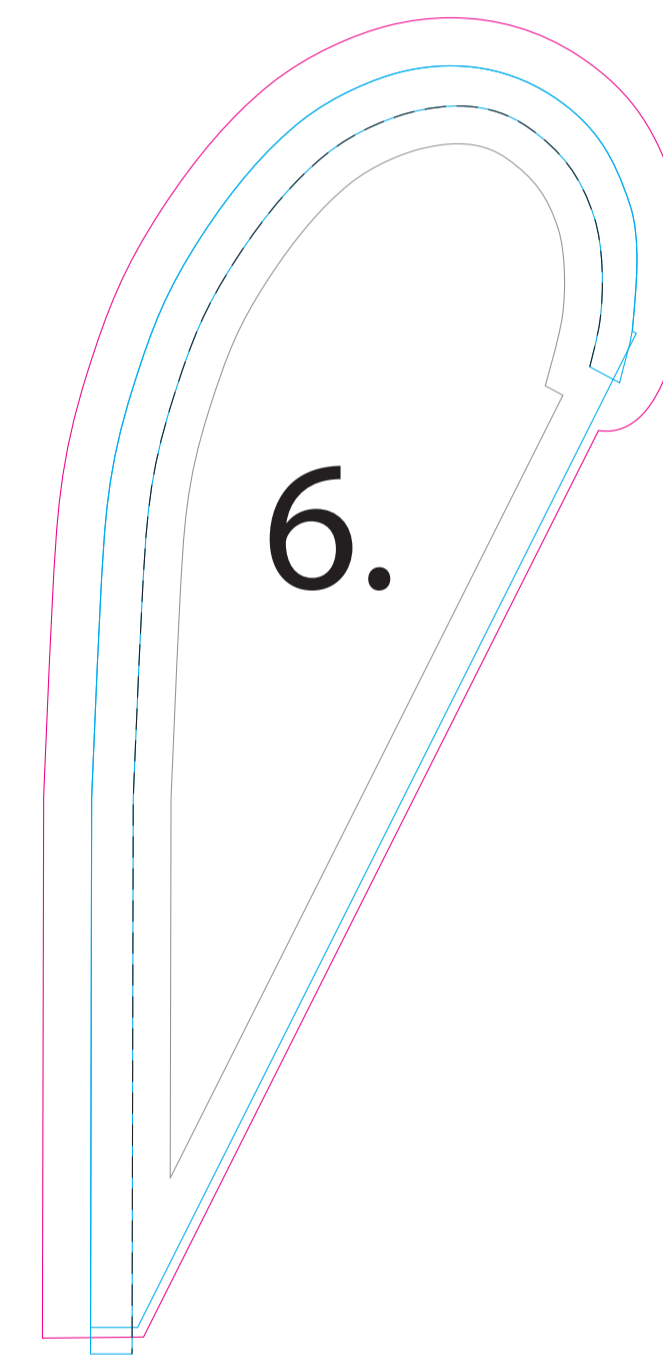
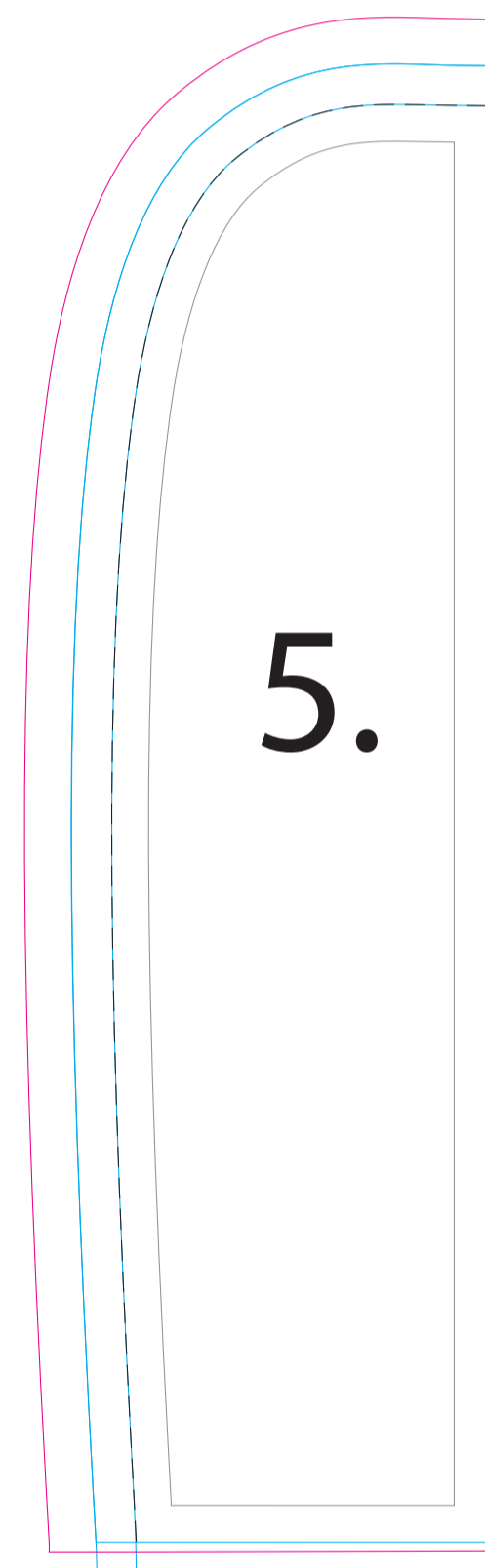
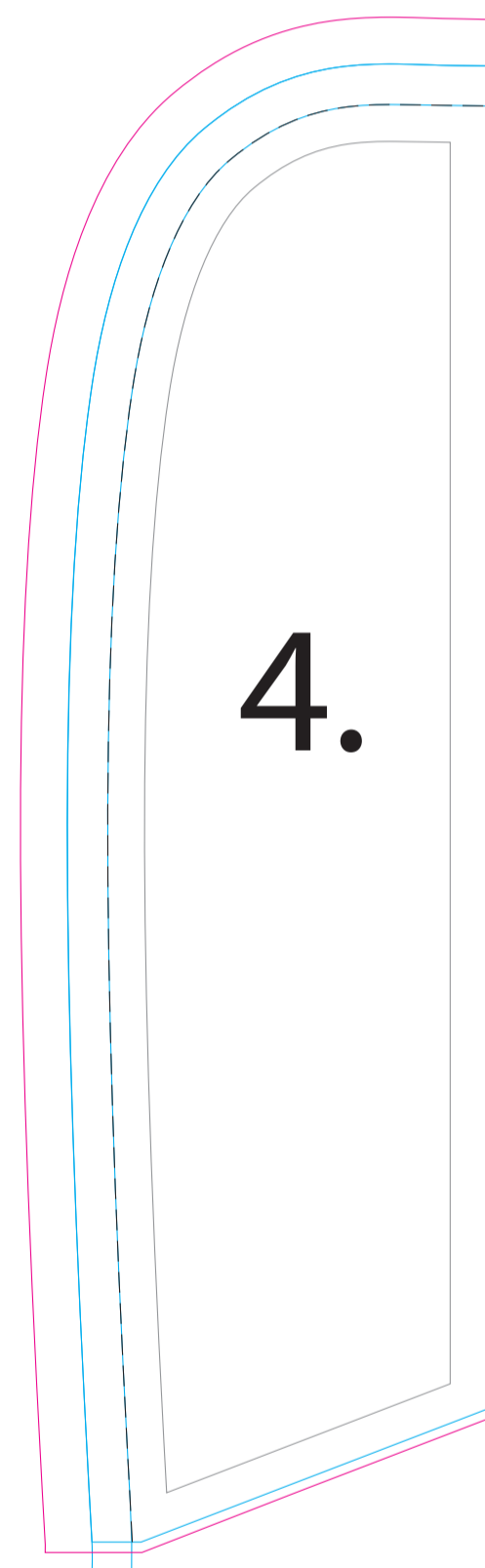
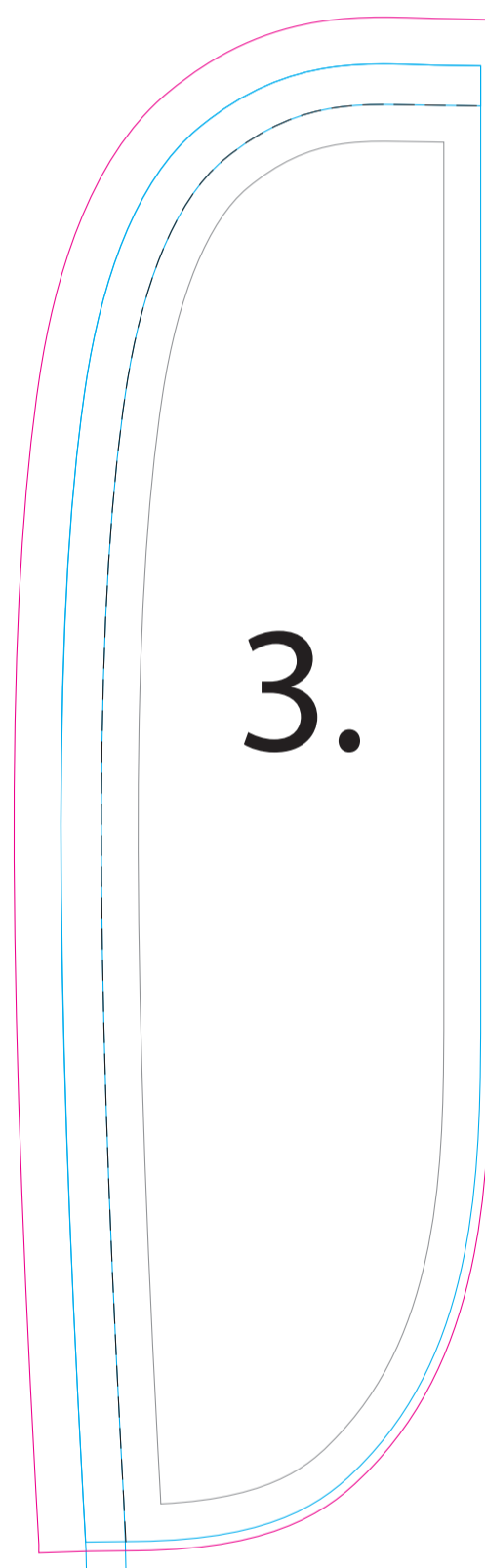
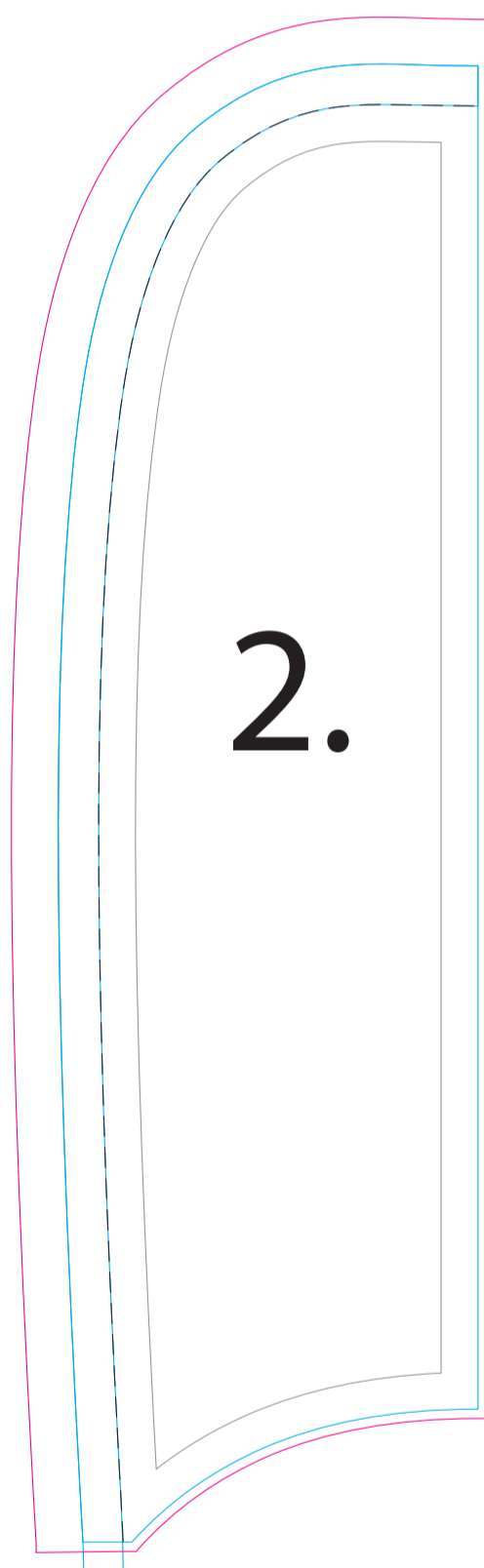
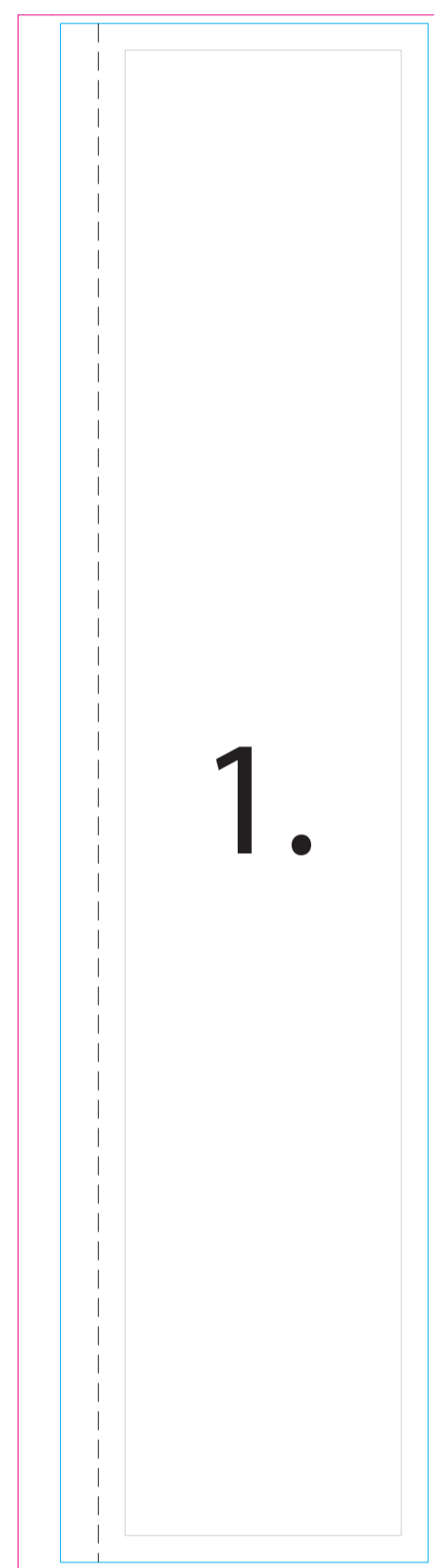


All templates are at 1:10 scale.

Please delete the templates not used.

1. Rectangle
2. Concave
3. Convex
4. Angled
5. Straight
6. Drop

-  = Text/Image Safety Line
-  = Bleed Line
-  = Finished Size
-  = Stitching Line



Rectangle
1.8ft (55cm) x 7.5ft (230cm)

Flying Shapes
1.8ft (55cm) x 6.6ft (200cm)

Drop
2.5ft (75cm) x 5.6ft (170cm)

- All artwork needs to be:
- Images: 1000 dpi @ 1:10 ratio
 - Text: completely vectorized
 - CMYK color mode
 - Spot colors (PANTONE) defined
 - Appropriate bleed

***Bleed Setup Custom for GCI finishing. (0.5" bleed on hemmed sides & 2.5" bleed on pole pocket sides)



Due to the inability to accurately reproduce some PANTONE® colors with CMYK inks, please reference a PANTONE® Color Bridge® book. This will provide a process color simulation for you to review.